



**COMBINED
SPIN FLANGER/BEADER
SBV 1200**



GERMANN+FREI AG

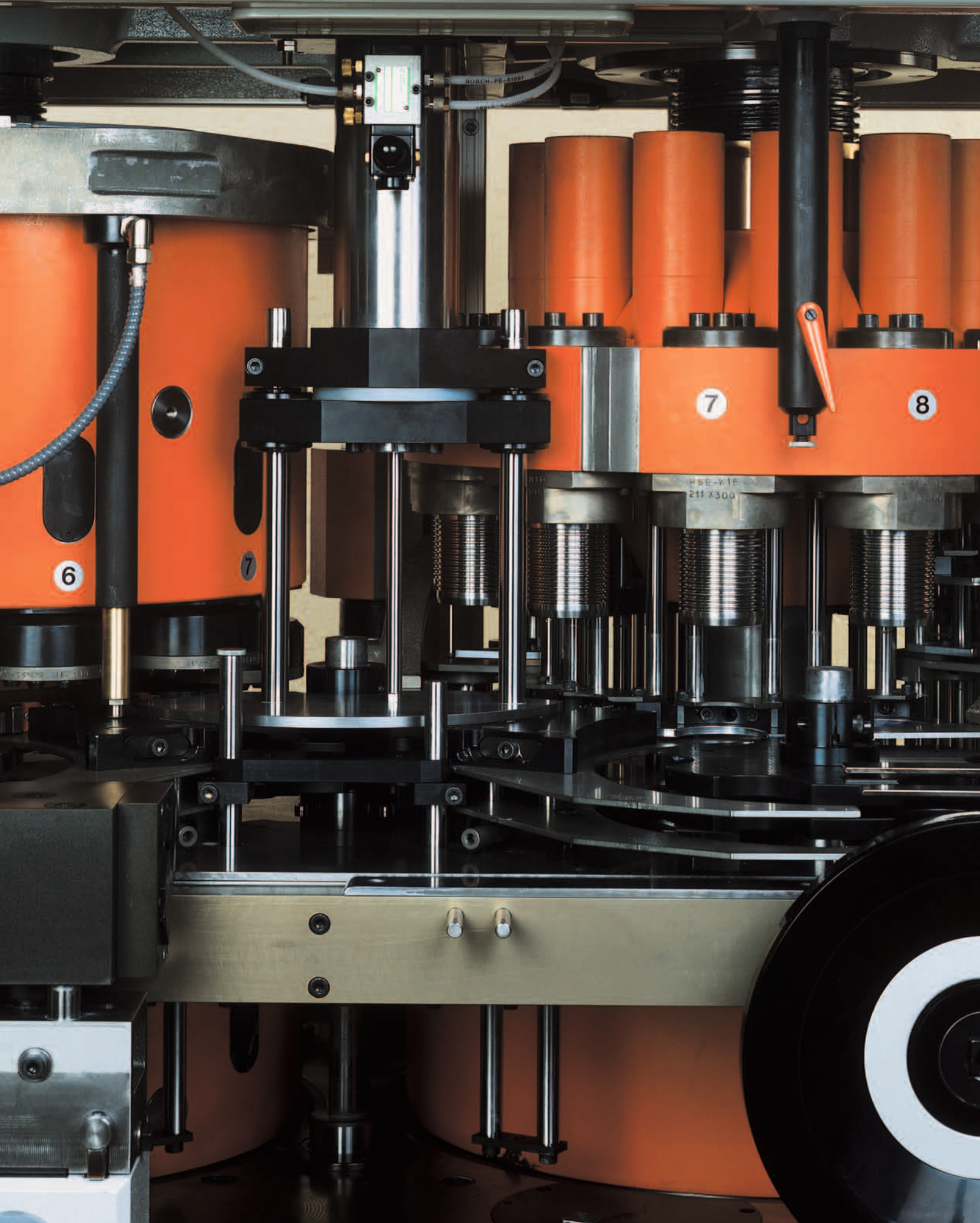
HIGH PRECISION MACHINES FOR CAN MANUFACTURING

COMBINED SPIN FLANGER/ BEADER SBV 1200



This machine includes two working stations, the first for flanging according to the well proven spin flanging principle and a second for beading with an outside rail. Thus the machine is suitable for cylindrical cans, both three-piece and two-piece, in particular when working with very thin tinplate in DR quality. The machine has 10 heads in the flanging station and 12 heads in the beading station. The vertical design allows the installation of a straight-lined and inexpensive conveyor through the machine.

Its essential characteristics are the consistently precise manufactured container, the compact design, the very smooth running without vibrations and the simple handling. For further information please see the technical details.





Planning and designing by modern CAD technology.



PLC controlled production units for high precision tool manufacturing.



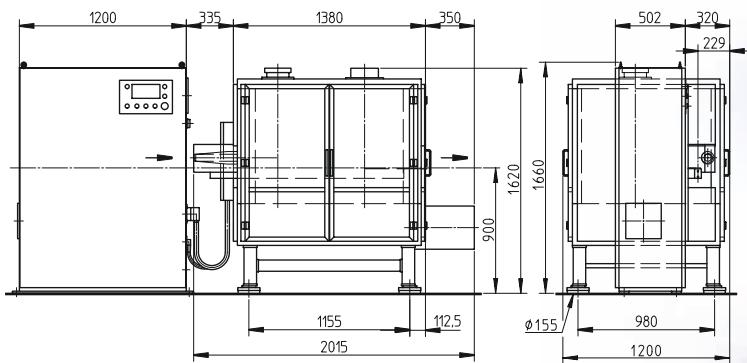
Control panel SBV 1200.

TECHNICAL DETAILS SBV 1200

- bead depth adjustable within 0,6 mm
- By-pass for cans which are not beaded
- high flexibility thanks to short change-over times for diameter and height
- excellent accessibility
- central oil lubrication system which reduces maintenance to an absolute minimum
- high flexibility and space saving setup thanks to electronic synchronisation
- electronic control of machine functions for the flanging and beading station as well as for the conveyor turrets
- electronic speed regulation
- declaration of CE-conformity for machine and control

STATE OF THE ART DESIGN

**TO INSURE HIGH
PRECISION MANUFACTURING**



TECHNICAL DATA		SBV 1200	SBV 1202
can type		three-piece	two-piece
diameter range	mm	52-84	52-84
cut body height range			
- flanging only	mm	45-152	45-152
- flanging and beading	mm	55-152	55-152
capacity per minute	cans	300-1200	300-1200
connected load	kW	15	15

subject to alterations

GERMANN+FREI AG
ADVANCED TECHNOLOGY

WITH NEW IDEAS TO INSURE SUCCESS

**NEW COMBINATION POSSIBILITIES OF
PRODUCTION UNITS MOST SUITABLE FOR
CUSTOMER'S REQUIREMENT**



*Parting and necking for
up to 1200 cpm*



*Combined
Spin Flanger/Beader
SBV 400.*



*Aerosol can line for
up to 750 cpm.*



GERMANN + FREI AG

GERMANN + FREI AG
Martinsbruggstrasse 92
CH-9016 St.Gallen
Switzerland
Phone +41(0)71-282 16 40
Telefax +41(0)71-282 16 50
E-Mail info@germannfrei.ch
www.germannfrei.ch